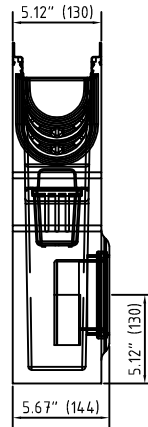
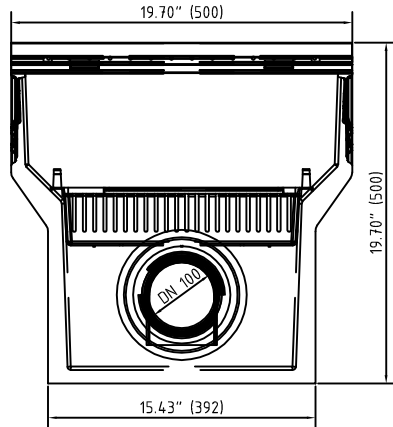


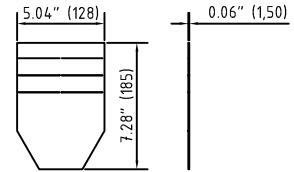
Accessories

1. Sump unit:
 (optional: Drain trap: 30056
 Silt bucket: 22515)
 V 10410291

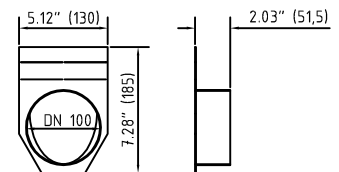


2. End cap:

V 19010230



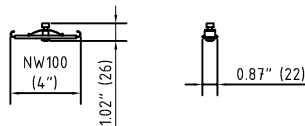
V 19010231



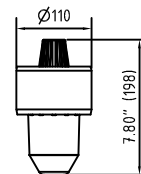
Accessories FILCOTEN® tec - V – 100 (4")

	Item Nno.	Accessories	Material	Weight	
				LBS	kg
<input type="radio"/>	10410291	Catch basin V 500/144/500 with pipe coupling DN 100	FILCOTEN	52.91	24.0
<input type="radio"/>	22515	Sediment bucket for catch basin	plastic	0.44	0.2
<input type="radio"/>	30030	Odour trap made of PVC bends DN 150/87°	plastic	8.60	3.9
<input type="radio"/>	30056	Drain trap for catch basin DN 100 for backfitting	plastic	0.22	0.1
<input type="radio"/>	30019	Drain trap for bottom outlet DN 100	plastic	0.44	0.2
<input type="radio"/>	19010230	Front/end cap	galvanized steel	0.66	0.3
<input type="radio"/>	19010231	End cap with outlet DN 100	galvanized steel	0.88	0.4
<input type="radio"/>	32087	Anti-vandalism locking device NW 100		0.22	0.1

3. Anti-vandal locking device 32087:



4. Drain trap for bottom outlet:
 PVC 30019



* See detailed spec sheet for the Anti-vandal locking device.